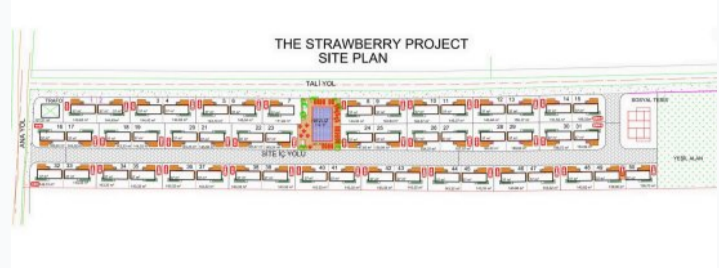
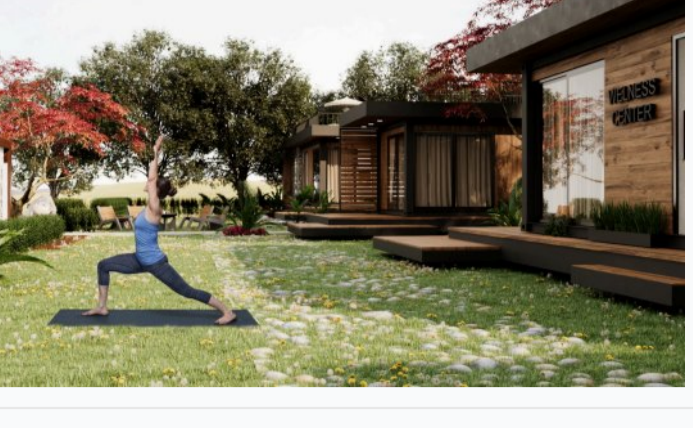


Armador construction (Developer) + Strawberry (Complex)

Strawberry residential complex

Location **Iskele, Dikarpaz**



About the project



Developer	Armador construction
Start of sale	01.09.2023
Key handover	2025
Houses/blocks	1
Building floor	1 Min 1 Max
Units total	50 - 1+1

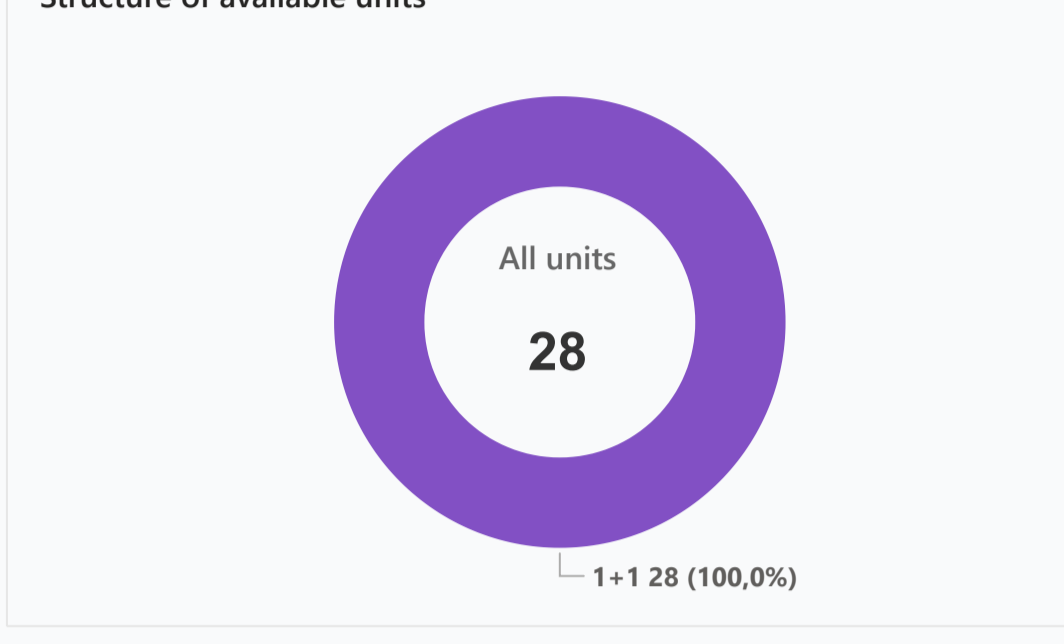
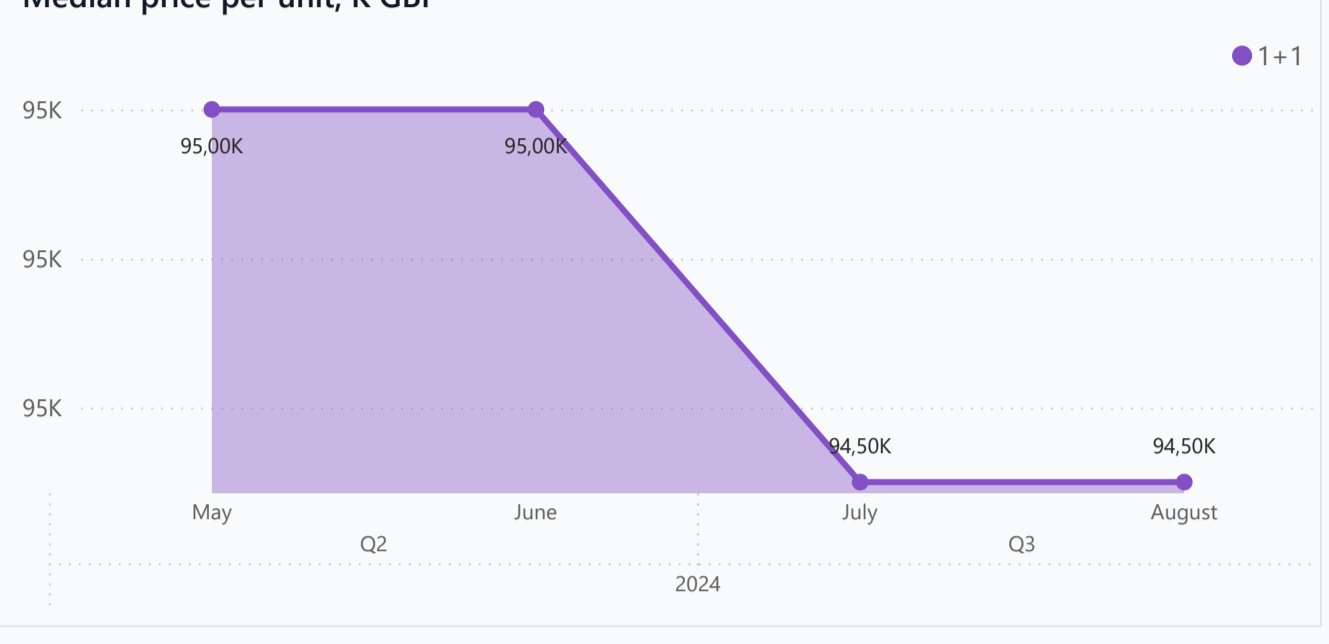
Distance to the sea - 3200 m
 Distance to key locations:
 Apostolos Andreas Monastery - 2 km AYFILLION BEACH 3 km
 THE ISLAND BEACH 5 km YENIERENKOY BEACH 12 km

Strawberry project is the first licensed Modular House Village in Northern Cyprus. If Nicosia is the pulsating heart of Cyprus, it is in the Karpaz that you find its soul.

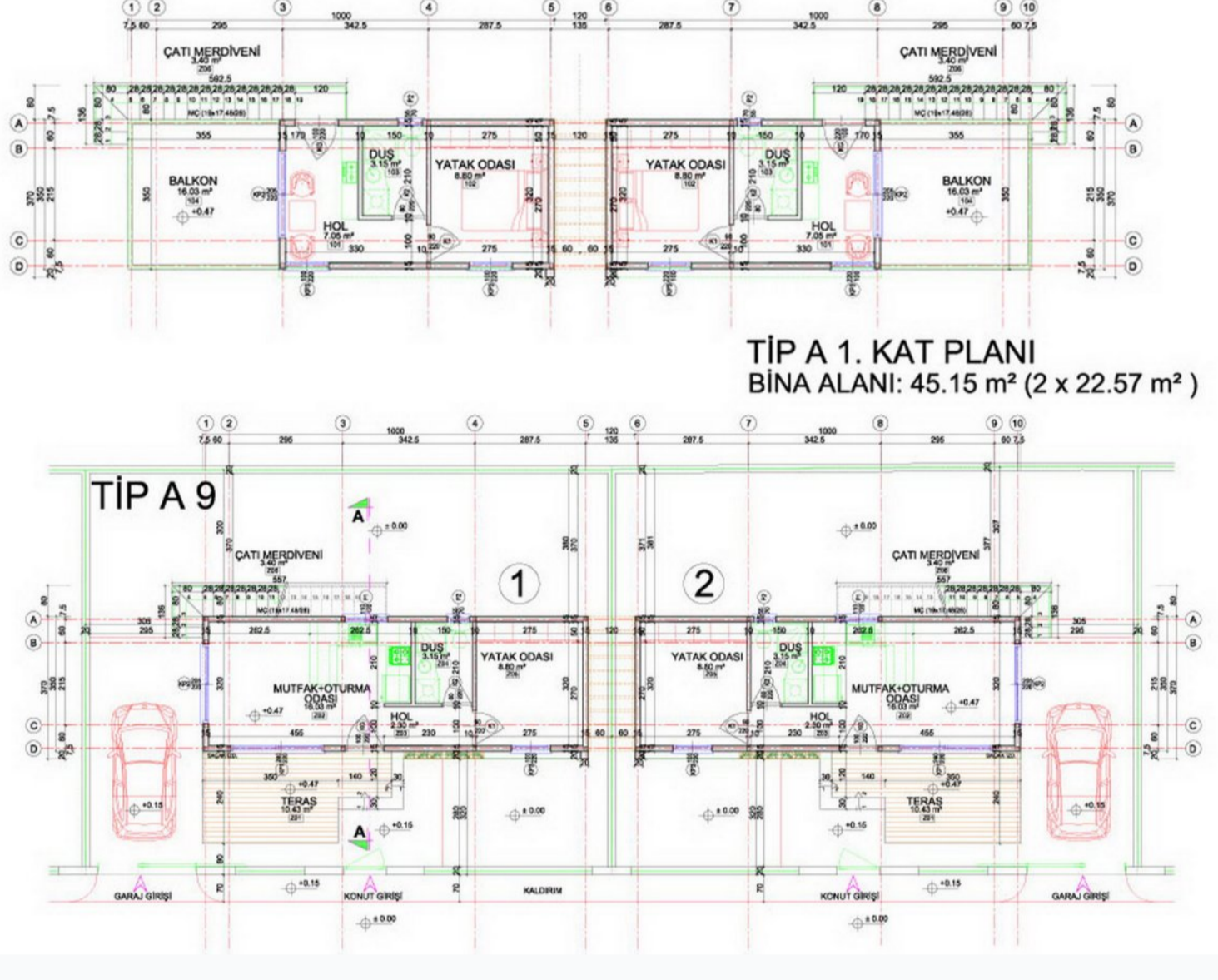
Complex infrastructure

- Bar ✔
- Café ✔
- Health centre ✔
- Massage rooms ✔
- Open pool ✔
- Sauna ✔
- Yoga and meditation rooms ✔

Available units 28 / 50 total



Plans



1+1

Payment plans

Deposit (non-refundable) 2000 GBP for 1 month

Option	Down payment	Installments months	Discount	Offer
Option 1	35 %	12	-	-
Option 2	60 %	12	-	Benefit: Furniture package In...
Option 3	100 %	-	-	Benefit: Furniture package Inc...
Option 4	-	-	-	-

Special offer

Fully furnished design package

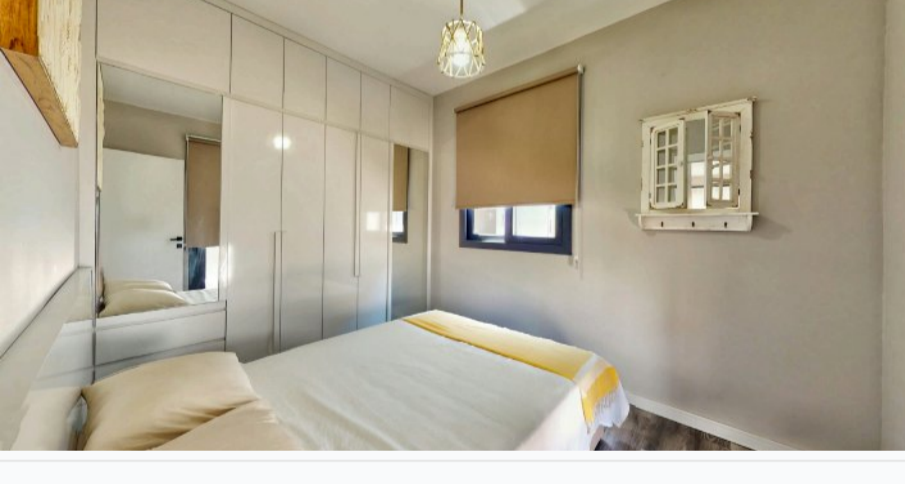
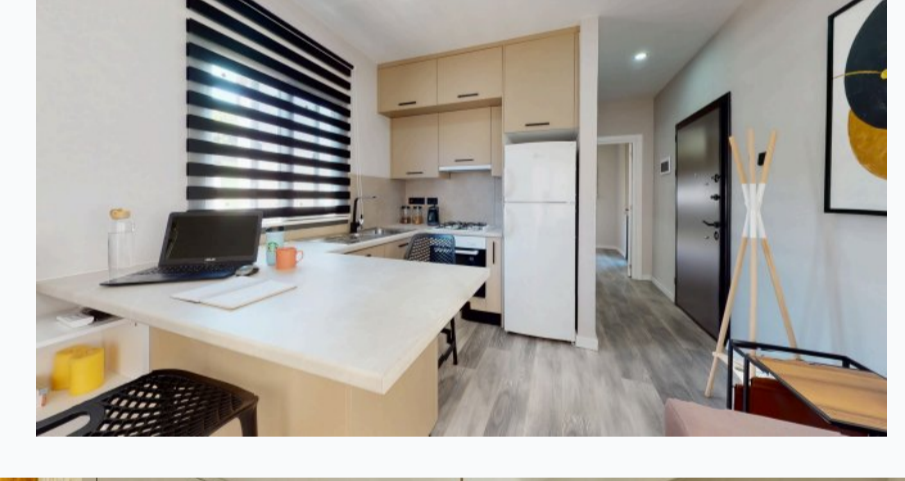
Rental guarantee
 12 month (360days)/ year: 8...

- Trafo 1500 GBP
- Resale -
- Maintenance fee 75 GBP monthly
- Rental services -

Details

Bedrooms	Subtype	Block	Unit №	Floor	View	Bathroom	Internal area, sq. m	Balcony/ Terrace, sq. m	Rooftop terrace, sq. m	Garden, sq. m	Gross covered area, sq. m	Current price, GBP	Price per sqm, GBP
1+1	Bungalow	Strawberry	1	0		1					38	84 500	2 224
1+1	Bungalow	Strawberry	16	0		1					38	84 500	2 224
1+1	Bungalow	Strawberry	17	0		1					38	84 500	2 224
1+1	Bungalow	Strawberry	2	0		1					38	88 500	2 329
1+1	Bungalow	Strawberry	18	0		1					38	89 500	2 355
1+1	Bungalow	Strawberry	19	0		1					38	89 500	2 355
1+1	Bungalow	Strawberry	20	0		1					38	89 500	2 355
1+1	Bungalow	Strawberry	22	0		1					38	89 500	2 355
1+1	Bungalow	Strawberry	25	0		1					38	89 500	2 355
1+1	Bungalow	Strawberry	26	0		1					38	89 500	2 355
1+1	Bungalow	Strawberry	27	0		1					38	89 500	2 355
1+1	Bungalow	Strawberry	29	0		1					38	89 500	2 355
1+1	Bungalow	Strawberry	30	0		1					38	89 500	2 355
1+1	Bungalow	Strawberry	10	0		1					38	94 500	2 487
1+1	Bungalow	Strawberry	11	0		1					38	94 500	2 487
1+1	Bungalow	Strawberry	13	0		1					38	94 500	2 487
1+1	Bungalow	Strawberry	14	0		1					38	94 500	2 487
1+1	Bungalow	Strawberry	3	0		1					38	94 500	2 487
1+1	Bungalow	Strawberry	33	0		1					38	94 500	2 487
1+1	Bungalow	Strawberry	34	0		1					38	94 500	2 487
1+1	Bungalow	Strawberry	35	0		1					38	94 500	2 487
1+1	Bungalow	Strawberry	36	0		1					38	94 500	2 487
1+1	Bungalow	Strawberry	37	0		1					38	94 500	2 487
1+1	Bungalow	Strawberry	4	0		1					38	94 500	2 487
1+1	Bungalow	Strawberry	48	0		1					38	94 500	2 487
1+1	Bungalow	Strawberry	5	0		1					38	94 500	2 487
1+1	Bungalow	Strawberry	6	0		1					38	94 500	2 487
1+1	Bungalow	Strawberry	41	0		1					38	99 500	2 618

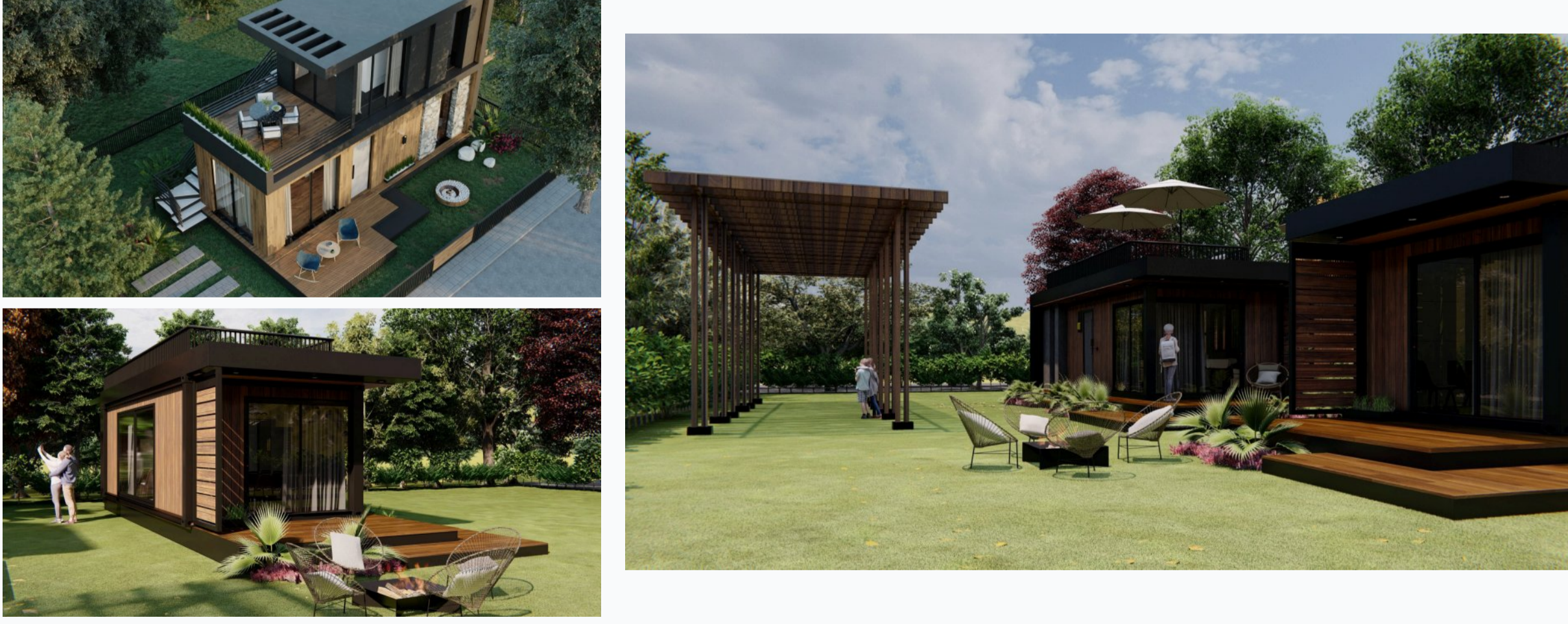
Interior specification



Interior specification

- Ceramic flooring ✔
- Double glazed windows ✔
- Fitted wardrobes in each bedroom ✔
- Kitchen cabinets up to the ceiling ✔
- Laminate flooring in the bedrooms ✔
- Toilet integrated in the walls ✔

Exterior specification



Exterior specification

- Jacuzzi ✔
- Private Garden ✔
- Private pool ✔
- Terracing with inbuilt lighting & power sockets ✔

Location of complex

